



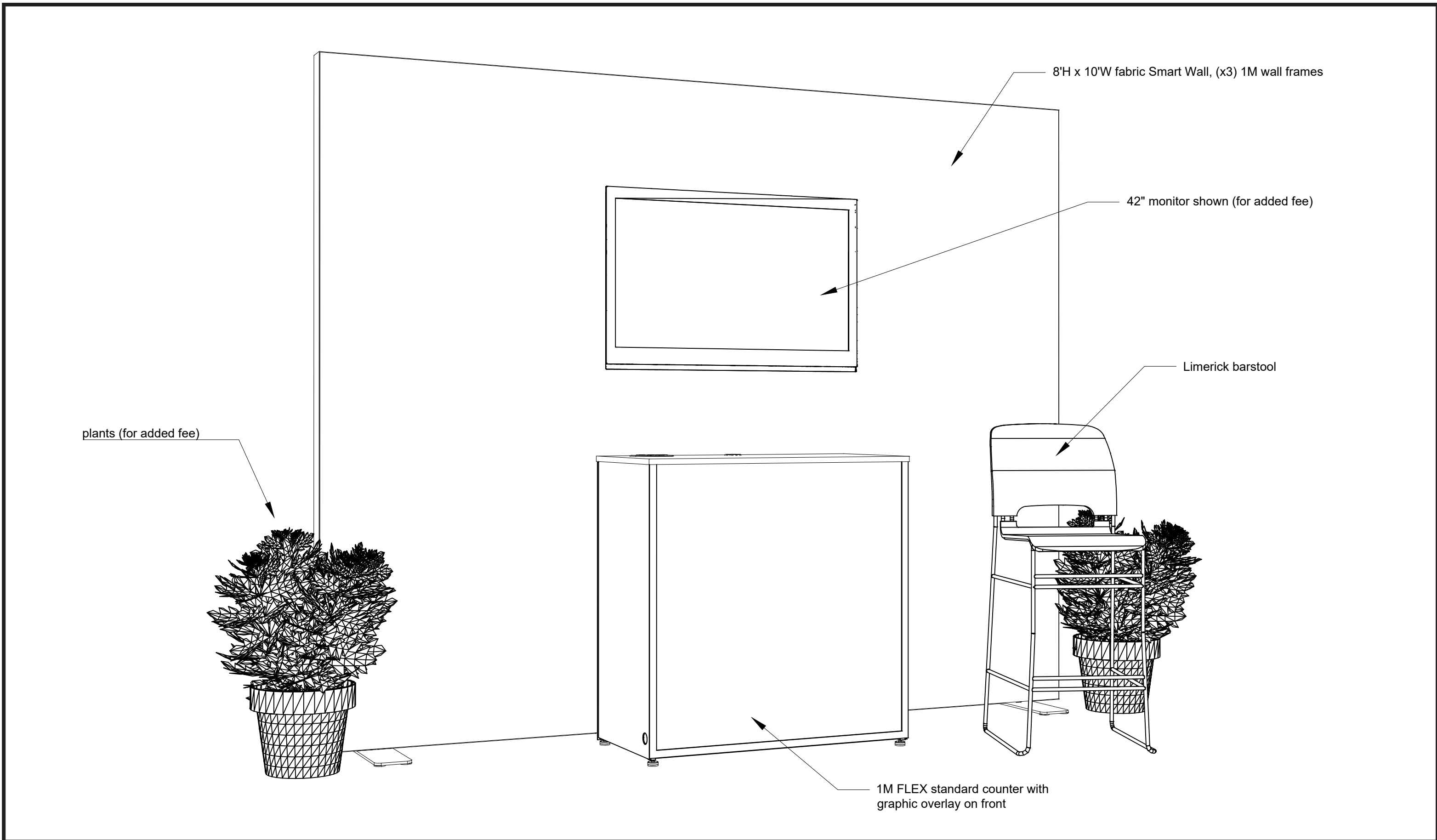
NAMIC
128TH ANNUAL CONVENTION
NATIONAL HARBOR
SEPTEMBER 17 - 20, 2023

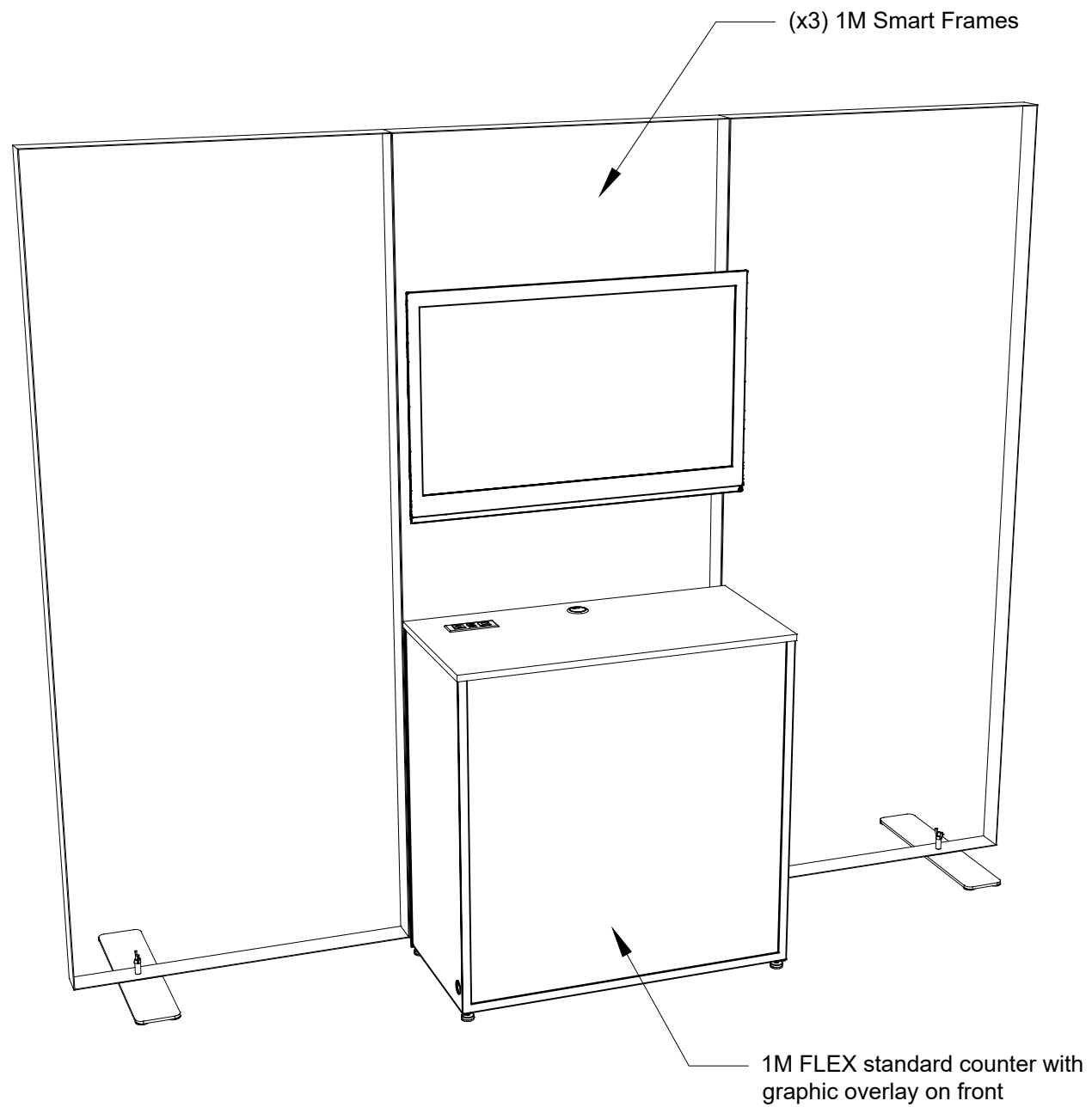
NAMIC
128TH ANNUAL CONVENTION
NATIONAL HARBOR
SEPTEMBER 17 - 20, 2023

Additional furniture and/or signage is not permitted with this booth package with the exception of mounting a TV to the wall

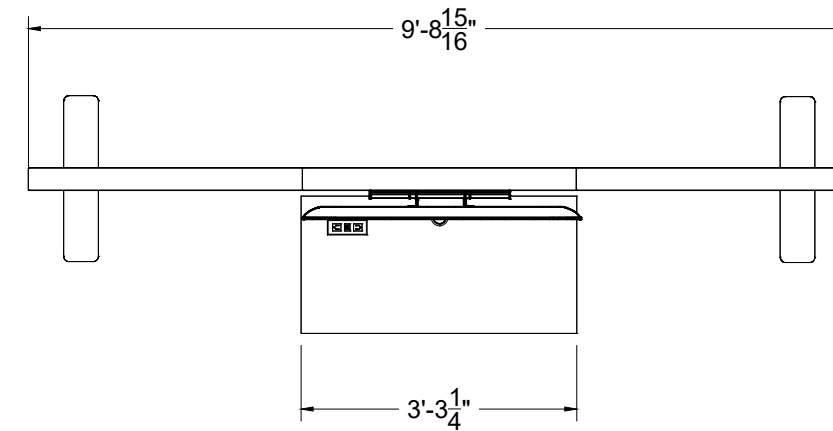
Replace your custom artwork or company logo where you see NAMIC artwork

Package upgraded to include two stools

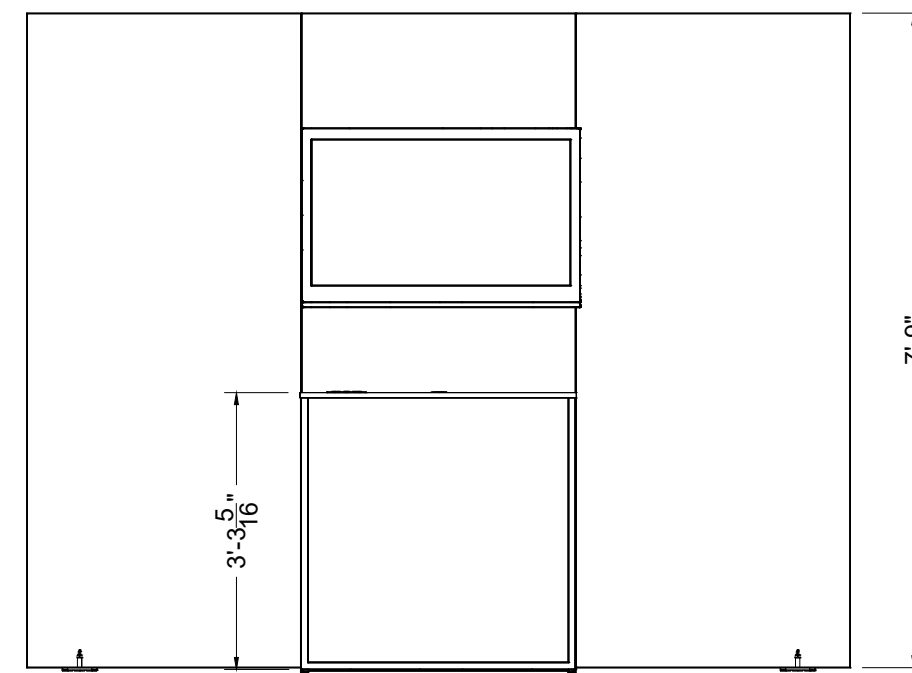




3D VIEW - 1



TOP VIEW



FRONT VIEW

NAMIC Booth

Qty	Type	Size	Area (SqFt)	Part Number	Description	Material	Color	Notes
1	FLEX Furniture	39" x 19-5/16" x 40-7/16"		60330004	1M Cabinet Assembly	Laminate	White	
1	FLEX Furniture	39-1/4" x 19-9/16"		60330009	Cabinet Top - Charging - 1M	Plywood 3/4"	White	
3	SP Frame	39" x 93"		60080034	SP 39" X 93" FRAME	Aluminum	Silver	
2	SP FOOT	23-5/8" x 4-15/16" x 2-3/4"		60080091	SP 24" BASE	Aluminum	Silver	
1	FLEX Insert Graphic	37-3/8" x 38-3/8"	10.0		1M Cabinet Insert Panel	PVC 3MM	Graphic	w/ Female Velcro
2	SP Fabric	116 1/2" x 92 1/2"	74.8		SP 116 1/2" X 93" Triple White - Graphic	Triple White	Graphic	
1	Electronics	39-1/2" x 1-3/4" x 24-3/4"			42" LCD Monitor w/ Wall Bracket	Standard	Black	extra added fee
2	Plants	15"d x 19"h			Plants-P10	Standard	Standard	extra added fee
1	Seating	18" x 17.75" x 44"			Limerick Stool	Plastic	Gray	